



STARLIGHT DEVELOPMENTS X BEIT NADIA | KATAMEYA CREEKS LA CIÉ

THE ULTIMATE IN BESPOKE LIVING



UNLOCK A NEW LEVEL OF LUXURY

INTRODUCING

La Clé

FULLY FINISHED RESIDENCES

LIMITED PROVISION



La Clé

FULLY FINISHED RESIDENCES

WHEN WE CLAIM BESPOKE LIVING, WE MEAN THAT NO MATTER WHAT YOUR MODERN LIVING REQUIREMENTS ARE, WE'VE ACCOUNTED FOR THEM, OFFERING YOU A LIMITED NUMBER OF FULLY FINISHED APARTMENTS.

THE D225 IS A RARE ASSET EXCLUSIVELY TAILORED FOR A CHOSEN FEW, WITH VALUE THAT APPRECIATES OVER TIME.

A BENCHMARK FOR LUXURY APARTMENT LIVING

ITALIAN CARRARA MARBLE



LINEN : OFF-WHITE



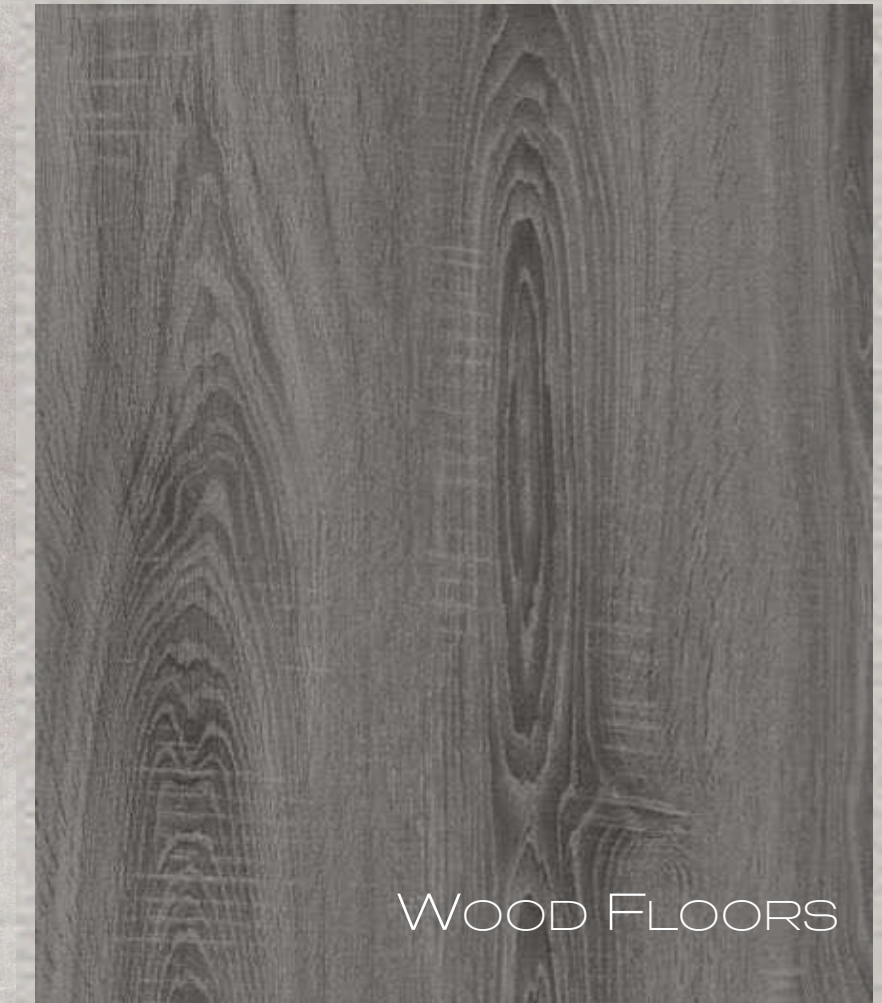
ICE GREEN MARBLE



TEXTURED PAINT



WOOD FLOORS



TINTED GLASS MIRROR

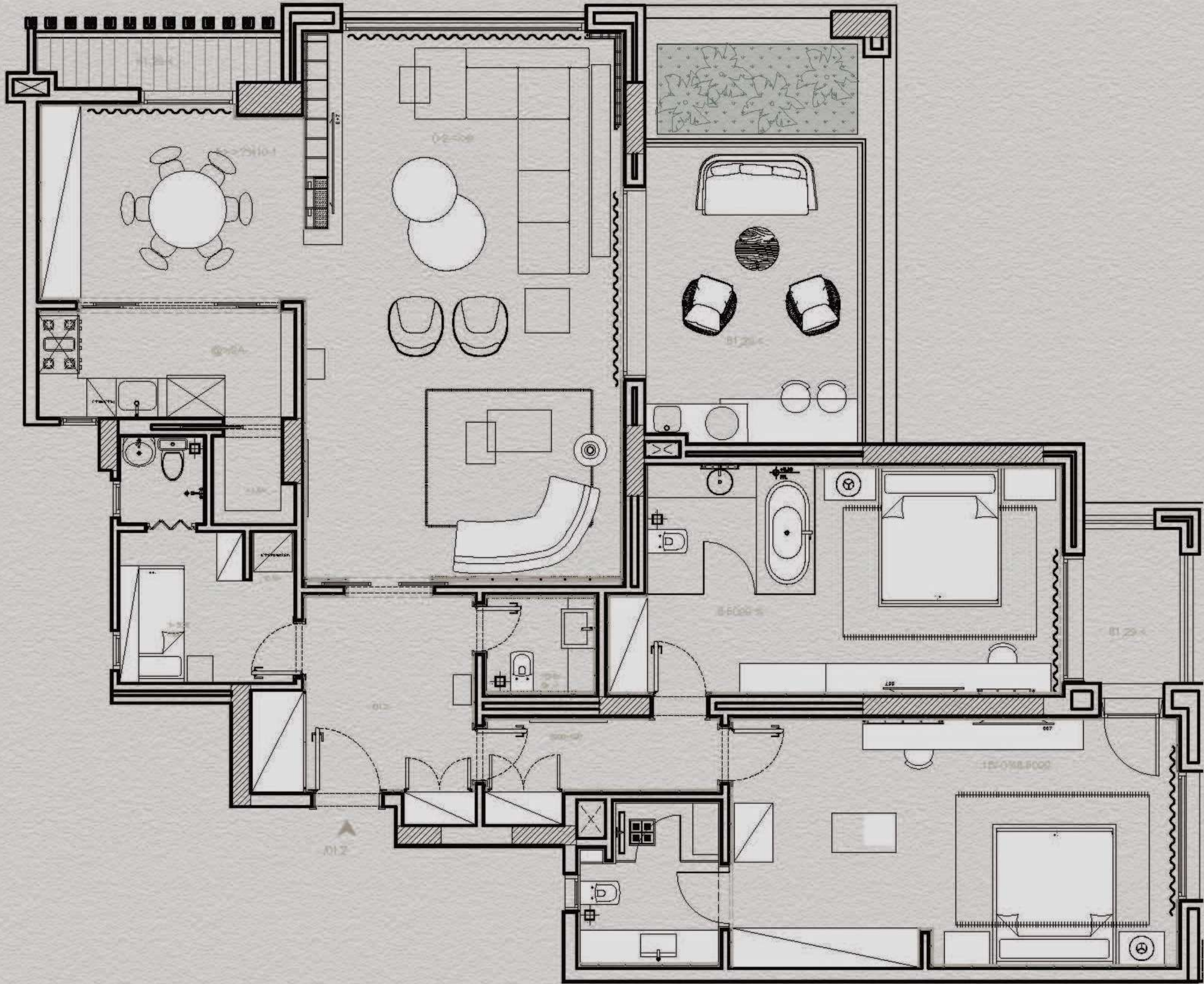


TEXTURED UPHOLSTERY



REED GLASS





La Clé

FULLY FINISHED RESIDENCES

2 Ensuite Bedrooms 225_{m2}

Reception:	42m2
Dining & kitchen:	22m2
Master Bedroom:	27m2
Master Bathroom:	5.2m2
Bedroom 1:	19m2
Bathroom 1:	5.6m2
Guest Toilet:	2.7m2
Terrace:	15.2m2
Terrace 2:	3.6m2





LIVING ROOM



DINING ROOM



GUEST BATHROOM

LET LIFE BE A BED OF ROSES, BECAUSE WHY NOT?

BEDROOMS ARE OUR SANCTUARIES.
ONE'S PERSONAL SPACE, WHICH IS WHY
AT THE CREEKS THE MASTER SUITE IS
THE MOST SELF-INDULGENT ROOM OF
THE UNIT. EACH MASTER SUITE COMES
EQUIPPED WITH ITS OWN RAYS OF LIGHT
THROUGH OUR MAGNIFICENT WINDOWS,
MASTER BATHROOM AND DEDICATED
CLOSET SPACE.

MASTER BEDROOM



MASTER BATHROOM



BEDROOM 1

EACH MASTER SUITE COMES
EQUIPPED WITH ITS OWN
RAYS OF LIGHT THROUGH
OUR MAGNIFICENT
WINDOWS, MASTER
BATHROOM AND DEDICATED
CLOSET SPACE.



BEDROOM 1





TERRACE

BEIT NADIA IS A CAIRO-BASED
ARCHITECTURE, INTERIOR DESIGN,
LANDSCAPING AND FURNITURE DESIGN FIRM
ESTABLISHED BY NADA SALEM IN 2017.
BEIT NADIA'S DESIGN TEAM WORKS ON A
RANGE OF COMMERCIAL AND RESIDENTIAL
PROJECTS; FROM DESIGN CONCEPTS TO
TURNKEY SOLUTIONS, DOWN TO THE FINEST
AND VERY LAST DETAIL, INCLUDING
BESPOKE FURNITURE AND PRODUCT
DESIGN.

OUR BELIEF IS THAT ANY SPACE NEEDS TO
BE A COLLABORATIVE PROCESS WITH THE
CLIENT WHICH ALLOWS US TO UNDER-STAND
AND TRANSLATE THE SPACE'S USAGE TO
SUIT BOTH FORM AND FUNCTION WHILE
CREATING DISTINCT AND MODERN
ENVIRONMENTS

DESIGNED BY

بيت ناديا
BEIT NADIA



A LUXURY 45-ACRES BOUTIQUE DEVELOPMENT DESIGNED IN NEOCLASSICAL ARCHITECTURE. KATAMEYA CREEKS COMPRISES OF LUXURIOUSLY DESIGNED VILLAS WITH PRIVATE GARDENS, LOW- RISE APARTMENT BUILDINGS WITH 360-DEGREE VIEWS OVER GREEN FIELDS, FEATURING ALL CORNER UNITS; ALL SERVED WITH UNDERGROUND PARKING, CONCIERGE AND A RECREATIONAL CLUBHOUSE.

KATAMEYA CREEKS FULLY EMBODIES THE CONCEPT OF CRAFTING THE IDEAL SCENE FOR A CLOSE AND VIBRANT COMMUNITY. WE PROVIDE UPSCALE LIVING CONDITIONS WITHIN A SAFE AND SERENE ENVIRONMENT.

MASTREPLANNED TO PERFECTION



BUILDINGS ARE ELEGANTLY SCATTERED TO AVOID HARSH DENSITY EACH HOME IS CAREFULLY POSITIONED TO PRESERVE SPACIOUS CONDITIONS AND TO FAVOUR OPTIMUM VIEWS SO THAT EVERY HOME CAN HAVE ITS ONE-OF-A-KIND QUALITY ABOUT IT. WHILE LUSCIOUS LANDSCAPE AND SOOTHING WATER FEATURES TIE IT ALL TOGETHER.



HOTEL



RETAIL



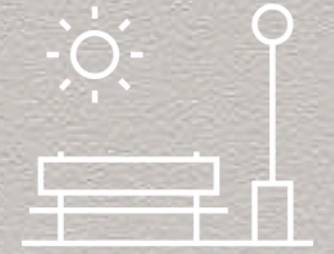
CLUB



OFFICE SPACE



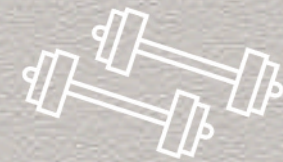
RESTAURANTS



POCKET SPARKS



SPA



GYM



FOUR FACADES



360 VIEWS



CYCLING



PARKING



CONCIERGE



LAUNDRY SPACE



VRV



STAFF ROOMS



ROOFED TERRACES



GARBAGE SCHUTE

CREATING TIMELESS VALUE



DESIGN
DRIVEN
DEVELOPER